



# HATSAN

ARMS COMPANY

Serious. Solid. Impact.



**⚠ WARNING:** NOT A TOY. THIS AIR GUN IS RECOMMENDED FOR ADULT USE ONLY. MISUSE OR CARELESS USE MAY RESULT IN SERIOUS INJURY OR DEATH. DANGEROUS WITHIN 600 YARDS (550 METRES).

**⚠ WARNING:** ONLY USE CLEAN, DRY COMPRESSED AIR TO FILL THIS AIRGUN. THE USE OF CONCENTRATED OXYGEN (O<sub>2</sub>) OR OTHER GASES CAN CAUSE FIRE OR AN EXPLOSION WHICH MAY RESULT IN SERIOUS INJURY OR DEATH, AND MAY CAUSE DAMAGE TO THE PRODUCT.

## HATSAN SORTIE SERIES INSTRUCTION MANUAL

# INSTRUCTION MANUAL

**PLEASE READ THIS MANUAL BEFORE USING YOUR AIR GUN**



### **Thank you for choosing HATSAN Sortie semi-auto action PCP air pistol!**

Always use caution when operating this air pistol. Learn and obey the laws of your local municipality, state, and/or country. Demonstrate responsibility while using this air pistol. Please read the entire manual very carefully before use. Any damage or injury resulting from misuse or incorrect handling is the sole responsibility of the owner.

This pistol allows you to fire multiple pellets and makes shooting a lot more fun giving you more chances to hit your target. This air pistol is cocked and reloaded all at once upon the pulling of the trigger. Squeezing the trigger not only opens the air valve to fire the loaded pellet, it also automatically loads the next round and resets the air valve. This enables you to shoot pellets one after another as quickly as you are able to pull the trigger and not have to reload until the rotatory clip is empty.

## **Warning!**

- 1. Each Hatsan PCP air rifle contains pressurized air when in use and should only be dismantled by a competent gunsmith. Do not attempt to dismantle the rifle if the rifle is partially or fully charged. Otherwise, serious damage/injury/death may be caused to you or others. The air rifle may also become damaged. Never attempt to dismantle the air cylinder parts or air gauge when the air cylinder is fully or partially charged. Serious injury/death/damage may result if these instructions are ignored because pressurized air is in the air cylinder.**
- 2. Use only factory manufactured pellets that are no longer than the thickness of the pistol's magazine. Do not use BB ammunition with your pistol.**
- 3. Hatsan PCP air rifles are designed specifically for use with clean, dry compressed air. NO OTHER GAS OR GAS COMBINATION CAN BE USED. The use of concentrated oxygen (O<sub>2</sub>) or other flammable/reactive gas is expressly prohibited - as fire or explosion may occur, resulting in serious injury or death and/or damage to the product.**

**The pistol may be filled from a hatsan hand pump, diver's bottle or a suitable compressor, MAXIMUM SAFE WORKING PRESSURE (SWP): 200 BAR.**

## **GENERAL INSTRUCTIONS**

There are open sights for the HATSAN Sortie. Before using your new air pistol, check that it is fully charged and abide by the following basic safety rules:

### **Basic Safety Rules:**

1. Treat every gun as if it is loaded.
2. Never point the air gun at anyone, or allow anyone to point an air gun at you, even if you know it is not loaded.
3. Do not brandish or display this product in public – as it may confuse people and could be mistaken for a firearm.
4. Always carry the pistol so that the direction of the muzzle is under control, even if you stumble.
5. Always be sure of your target and what lies behind it before firing your pistol – this product may be dangerous up to 650 yards.
6. Beware of targets that tend to cause ricochets.
7. Never leave a loaded pistol unattended.
8. It is compulsory that eye & ear protection is worn when charging the air tube and when shooting.
9. This is a high-powered air gun for use by those 16 years of age or older.



The Hatsan Sortie semi-auto PCP pistol has a 14-shot magazine in .177 (4.5mm), 12-shot magazine in .22 (5.5mm)

<b>Barrel Length</b>	200 mm (7,9")
<b>Overall Length</b>	420 mm (15,5")
<b>Weight</b>	2 kg (4,4lbs)
<b>Maximum cylinder fill pressure</b>	200 Bar

Caliber	Max. Muzzle Velocity (*)	Energy (*)	
		Joules	ft.lbs
4.5mm / .177cal	245m/s (800fps)	16,5	12
5.5mm / .22cal	215m/s (700fps)	21,5	16

The energy restriction of a particular country can be achieved by the reduction in the muzzle velocity. The above maximum velocity figures are obtained when no energy restriction is applied on the air pistol and measured at an optimum air tube pressure value. As a nature of unregulated PCP air guns, the muzzle velocity is low at maximum pressure levels in the air tube, then it starts to increase with each shot and gets to its maximum value at an optimum pressure level in the air tube; after it starts to decrease again as the pressure in the air tube is gradually reduced upon shooting.



- |                          |                   |                  |
|--------------------------|-------------------|------------------|
| 1. Stock                 | 5. Picatinny Rail | 9. Barrel        |
| 2. Cocking lever         | 6. Grip           | 10. Air tube     |
| 3. Adjustable Rear sight | 7. Trigger        | 11. Filling hole |
| 4. Magazine              | 8. Safety         | 12. Front Sight  |

Safety button can be set to 'ON' and 'OFF' position manually.

- To set the safety to '**ON**', pull safety button to the rear. In this position, the trigger cannot be pulled and the gun cannot be fired. (Fig.1)
- To set the safety to '**OFF**', push safety button forward. In this position, the gun is ready to shoot. (Fig. 2)



Fig. 1



Fig. 2



The Hatsan Sortie air pistol has optional fiber optic rear & front sight assemblies. The rear-sight is a sensitive device and can be adjusted both for elevation and windage.

### Windage adjustment

- If the shot is left of the target, turn the SCREW#1 clockwise. (Fig. 3)
- If the shot is right of the target, turn the SCREW#1 counter-clockwise. (Fig. 3)

### Elevation adjustment

- If the shot is too high, turn SCREW#2 clockwise. (Fig. 3)
- If the shot is too low, turn SCREW#2 screw counter-clockwise. (Fig. 3)

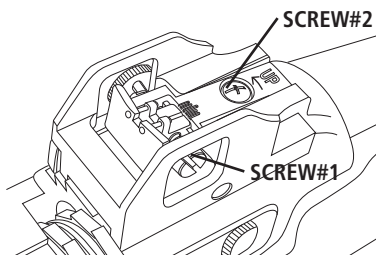


Fig. 3

## Section V. OPERATING INSTRUCTIONS

### Warning!

- It is not recommended that the Sortie be operated from the left handed shooting position. The bolt located on the right hand side of the air gun cycles with each shot fired and may cause injury if operated left handed.
- Before filling the air tube; make sure the safety is in the ON position, no pellets are loaded in the air pistol and/or barrel and magazine is not mounted in the gun. If the air tube is completely empty; fill in air tube after cocking the gun and keeping the cocking handle/bolt lever open at the rear.
- Take all safety measures before filling the air tube. It is compulsory for the user and bystanders to wear eye & ear protection when filling the air tube.
- While filling in the air tube; the pressure in it must be monitored from the air gauge of the hand pump or scuba charging kit. Do not look at the air gauge on the air gun during filling process. Instead, reference the gauge on your fill device.

### Charging the Pistol:

- Pull the bolt lever backwards until it stops and locks at the back. Keep the bolt lever locked at the rear.

### THIS OPERATION COCKS THE TRIGGER MECHANISM/HAMMER ASSEMBLY.

- Fit the filler nozzle to the air-line of the charging equipment, which must incorporate a pressure gauge. Ensure both filler nozzle and pistol filler hole are clear from dirt and gently push the nozzle into the filler hole. (Fig.4)
- Fill the air tube up pressure quoted previously in this manual. Do not exceed the maximum fill pressure as this will reduce the muzzle velocity of the pellets and may damage pistol components which may cause danger to you and others around you.
- When using the diver's bottle, refill the pistol slowly to prevent the heat created by the filling process from damaging the pistol's components.
- Undo the bleeder valve on the hose before disconnecting the fill nozzle from the pistol.

### Loading the pistol & shooting

- The magazine is composed of a rear side (transparent part) and a front side (aluminum part). The magazine is designed to be allowed to fit only one way into the pistol.



Fig. 4

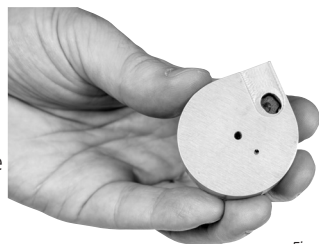


Fig. 5



- Spin the aluminum side counter-clockwise to release the cover from the catch point. Then insert the pellet in backwards (skirt first) into the first location. (Fig.6)



Fig. 6

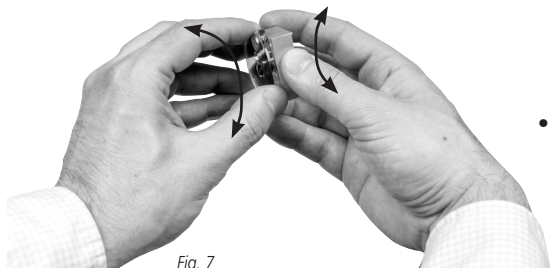


Fig. 7

- Spinning the cover in the same direction and holding the magazine in a vertical position continue placing the pellets until all positions are filled. Once the magazine is full, spin the aluminum side in the opposite direction and return the magazine to its initial position. (Fig.7)

- With the transparent cover facing the butt of the pistol insert the magazine from the right side of the gun and push it inwards all the way in until it's fully in place. (Fig. 8 & 9)



Fig. 8



Fig. 9

#### **DO NOT RELEASE THE BOLT LEVER UNTIL YOU ARE READY TO FIRE.**

- Once you are ready to fire, release the bolt lever and move it all the way forward. (Fig.10)



Fig. 10

- Aim at your intended target, disengage the safety and get ready to shoot.
- Pull the trigger, the pistol will fire and re-cock the bolt at the same time.

## **Warning!**

1. Your pistol is able to operate as a semi-automatic gun as long as the pressure inside the air tube is above 100 bars.
2. Make sure the bolt lever is closed fully before you shoot.
3. In case of a malfunction, pull the bolt lever, remove the magazine and squeeze the trigger aiming your pistol in a safe direction. Then insert the magazine again.



4. **Never re-cock your pistol without shooting. Each time you re-cock the bolt lever without firing, it will feed a pellet into the barrel, which will lead to a pellet accumulation inside the barrel.**
5. **If shooting does not happen after squeezing the trigger, immediately remove the magazine and pull the trigger pointing your pistol in a safe direction. Otherwise you may accidentally leave a pellet in the barrel.**

## **Section VI. MAINTENANCE**

### **Warning!**

**Never attempt to disassemble this pistol. Never fire when the air in the tube is removed. Failure to obey this instruction could result in damage to your gun.**

Never lubricate inside the barrel as this will affect the accuracy & grouping of the pistol in negative manner. Occasionally apply proper mineral based oils sparingly to the following parts:

- The trigger mechanism
- The pellet probe
- The cocking lever sliding surface
- The stern of the magazine pin and the magazine release

#### **DO NOT OVER-LUBRICATE THE PISTOL!**

- It is recommended to clean the barrel with a cleaning rod every 500-1000 shots. Never lubricate inside the barrel.
- Before you begin oiling or cleaning your air gun, always check to make sure it is unloaded.
- Always be sure your gun barrel is clean and not blocked.
- After cleaning ensure that no cleaning patch or other obstruction remains in the barrel.
- Annually, take your air gun to a gunsmith even if it seems to be working well, since some issues in your gun may not be apparent from external examination.
- Take your air gun to a gunsmith if water, sand, etc. enters the internal mechanism of the air gun, for complete cleaning.
- Dangerous conditions may occur if you do not keep your air gun clean and working properly.

#### **Quick Fill Nozzle O-Rings Replacement**

After a period of time, the O-rings on the fill nozzle will need to be replaced. The need for the replacement will become noticeable if air is heard leaking from the nozzle or the nozzle is ejected from the port while charging the gun. Always ensure to replace both O-rings.

## **Safety Measures & Warnings**

- This air gun will shoot if cocked, loaded, safety disengaged and trigger pulled.
- Air guns are not toys. Never let young children use an air gun unsupervised. Adult supervision is strictly required during use. Misuse or careless use may cause serious injury or death.
- Learn how your air gun operates and safe gun handling procedures before loading and using it.
- **ALWAYS USE EYE & HEARING PROTECTION AND MAKE BYSTANDERS USE THE SAME.** Failure to do so may result in eye injuries and permanent hearing loss.
- Do not point at anything you do not intend to shoot even though the gun is unloaded. Always keep the air gun pointed in a safe direction.
- Never pull a air gun toward you by the muzzle.
- Always aim at a safe target, taking care that it does not conceal any other object.
- Before you fire, consider where the pellet will travel should you miss your intended target, thus ensuring no damage or harm could result.
- Be sure of your target before you pull the trigger. Never shoot at sounds.
- When shooting, always have a safe shooting range, that is; have a safe area forshooting, a safe distance between you and the target, and a safe backstop to trap the pellets and hold the target.
- Do not fire at a target, which allows ricochets or deflections.



- Do not fire into or at water.
- Do not fire at or near power lines or insulators. Be especially careful in wooded areas where power lines may not be as visible.
- Do not load the gun until you are ready to shoot.
- Always keep your fingers away from the trigger & muzzle during cocking and handling.
- Do not walk, run or jump when carrying a loaded or cocked air gun. A loaded or a cocked air gun should never be carried inside a vehicle, house, camp or public place.
- Never climb a tree or fence or jump a ditch with a loaded air gun. In such a case, first unload it and hand the air gun to a friend or place it on the ground on the other side of the obstacle before crossing yourself.
- When transporting the air gun, keep it unloaded and 'on safe'.
- Always keep the air gun 'on safe' until you are ready to shoot even if the air gun is unloaded.
- Do not put the air gun away loaded and unattended.
- Always check to see if the air gun is 'on safe' and unloaded when getting it from another person or from storage.
- **ALWAYS KEEP THE AIR GUN AND/OR PELLETS OUT OF THE REACH OF CHILDREN.**
- Keep the air gun and pellets in separate places, better if under lock and key.
- Do not attempt to disassemble or tamper with your air gun. Use a competent gunsmith. Many air guns contain powerful springs which can cause serious injury if released in an uncontrolled manner.
- Always handle and treat your air gun as though it were loaded.
- Improper use or handling of air guns is not the responsibility of the manufacturer or distributor, under any circumstances. The user is responsible for any harm, which may be caused.
- Think first, fire second.
- Don't rely on any mechanical safety. Half safe is not safe.
- Be safe not sorry.
- Respect other's property.
- Air guns should never be used under the influences of alcohol or drugs.





[facebook.com/hatsan.com.tr](https://facebook.com/hatsan.com.tr)



[twitter.com/hatsan\\_arms](https://twitter.com/hatsan_arms)



[youtube.com/hatsanarms](https://youtube.com/hatsanarms)



**HATSAN**  
ARMS COMPANY

[www.hatsan.com.tr](https://www.hatsan.com.tr)  
[www.hatsanusa.com](https://www.hatsanusa.com)