



HATSAN
ARMS COMPANY

Serious. Solid. Impact.

HATSAN PCP AIR RIFLE FACTOR SERIES INSTRUCTION MANUAL



FACTOR SNIPER L



FACTOR SNIPER S



FACTOR



FACTOR RC



FACTOR FT



FACTOR BP

PLEASE READ THIS MANUAL BEFORE USING YOUR AIRGUN

CONTENTS	PAGE
GENERAL INSTRUCTIONS	3
TECHNICAL SPECIFICATIONS (FACTOR,FACTOR RC, FACTOR BP, FACTOR FT)	4
TECHNICAL SPECIFICATIONS (FACTOR SNIPER L,FACTOR SNIPER S).....	5
EXPLODED VIEW(FACTOR).....	6
PART LIST(FACTOR)	7
EXPLODED VIEW(FACTOR RC).....	8
PART LIST(FACTOR RC)	9
EXPLODED VIEW(FACTOR BP).....	10
PART LIST(FACTOR BP)	11
EXPLODED VIEW(FACTOR SNIPER).....	12
PART LIST(FACTOR SNIPER)	13
BASIC PARTS OF YOUR GUN	14
MANUAL SAFETY.....	15
ADJUSTABLE TRIGGER	15
HAMMER PRELOAD ADJUSTMENT.....	15
ADJUSTABLE TRANSFER PORT	15
REMOVABLE AIR BOTTLE.....	16
ADJUSTABLE REGULATOR.....	16
TRIGGER SHOE ADJUSTMENT	17
OPERATING INSTRUCTIONS.....	17
LOADING THE RIFLE AND SHOOTING	18
REVERSIBLE COCKING LEVER FOR AMBIDEXTROUS OPERATION.....	19
INSTALLING A MODERATOR	19
MAINTENANCE.....	20
SAFETY MEASURES & WARNINGS.....	20

PLEASE READ THIS MANUAL BEFORE USING YOUR AIR GUN

Thank you for choosing the Hatsan Factor series air rifle.

Always use caution when operating this rifle. Learn and obey the laws of your local municipality, state, and/ or country. Demonstrate responsibility while using this air rifle. **Please read this manual completely before handling or shooting your air gun.** It is the sole responsibility of the user to operate this air gun properly and safely.

WARNING!

- Each Hatsan PCP air rifle contains pressurized air when in use and should only be dismantled by a competent gunsmith. Do not attempt to dismantle the rifle if the rifle is partially or fully charged. Otherwise, serious damage/injury/death may be caused to you or others. The air rifle may also become damaged. Never attempt to dismantle the air cylinder parts or air gauge when the air cylinder is fully or partially charged. Serious injury/death/damage may result if these instructions are ignored because pressurized air is in the air cylinder.
- Use only factory manufactured pellets that are no longer than the thickness of the rifle's magazine. Do not use BB ammunition with your rifle.
- Hatsan PCP air rifles are designed specifically for use with clean, dry compressed air. NO OTHER GAS OR GAS COMBINATION CAN BE USED. The use of concentrated oxygen (O₂) or other flammable/reactive gas is expressly prohibited - as fire or explosion may occur, resulting in serious injury or death and/or damage to the product.
- The rifle may be filled from a hand pump, a diver's bottle or a suitable compressor.

MAXIMUM SAFE WORKING PRESSURE for FACTORS (SWP):	200 BAR	250 BAR	300 BAR
	FACTOR FT	FACTOR BP FACTOR FACTOR RC	FACTOR SNIPER L FACTOR SNIPER S

GENERAL INSTRUCTIONS

Before using your new air rifle check that it is fully charged and abide by the following basic safety rules.

Basic Safety Rules:

- Treat every rifle as if it is loaded.
- Never point the rifle at anyone, or allow anyone to point a rifle at you, even if you know it is not loaded.
- Do not brandish or display this product in public – as it may confuse people and could be mistaken as a firearm.
- Always carry the rifle so that the direction of the muzzle is under control, even if you stumble.
- Always be sure of your target and what lies behind it before firing your rifle – this product may be dangerous up to 650 yards.
- Beware of targets that tend to cause ricochets.
- Never leave a loaded rifle unattended.
- It is compulsory that eye & ear protection is worn when charging the cylinder and when shooting.
- This is a high-powered airgun for use by those 16 years of age or older.

TECHNICAL SPECIFICATIONS

MODEL	FACTOR			FACTOR RC			FACTOR BP			FACTOR FT		
	.45 mm/ .177 cal	5.5 mm/ .22 cal	6.35 mm/ .25 cal	4.5 mm/ .177 cal	5.5 mm/ .22 cal	6.35 mm/ .25 cal	4.5 mm/ .177 cal	5.5 mm/ .22 cal	6.35 mm/ .25 cal	4.5 mm/ .177 cal	5.5 mm/ .22 cal	6.35 mm/ .25 cal
CALIBER												
MAX. MUZZLE VELOCITY	355 m/s (1170 fps)	325 m/s (1070 fps)	285 m/s (970 fps)	306m/s (1010fps)	288m/s (950fps)	285m/s (870fps)	333m/s (1100fps)	324m/s (1070fps)	294m/s (970fps)	294m/s (970fps)	275m/s (910fps)	252m/s (830fps)
ENERGY												
Joules	36	51	57	26.5	40	45.3	31.5	50.5	56.4	24.5	36.5	41
ft.lbs	27	38	42	19.5	29.5	33.5	23.2	37.25	41.6	18	27	30.5
MAGAZINE CAPACITY	24	21	19	24	21	19	24	21	19	24	21	19
AIR TUBE VOLUME	500 cc(Aluminum)			580 cc(carbon fiber)			580 cc(carbon fiber)			400 cc(Aluminum)		
FILL PRESSURE	250 BAR			250 BAR			250 BAR			200 BAR		
NUMBER OF SHOTS PER FILL	320	310	300	-	-	-	-	-	-	-	-	-
NUMBER OF SHOTS AT OPTIMAL VELOCITY	105	100	90	140	130	120	70	60	50	60	60	60
STOCK	Telescopic stock. Elevation adjustable cheek rest, Pistol grip			Telescopic stock. Elevation adjustable cheek rest, Pistol grip			Elevation adjustable cheek rest, Adjustable Pistol grip			FT Butt plate and Pistol Grip		
OVERALL LENGTH	1025mm (40.3") Stock Shortened 1090mm (42.9") Stock Extended			1025mm (40.3") Stock Shortened 1090mm (42.9") Stock Extended			870mm (34.25")			920mm (36.2")		
BARREL LENGTH	585mm (23")			585mm (23")			585mm (23")			450mm (17.7")		
WEIGHT	3.6kg (7.9lbs)			3.6kg (7.9lbs)			3.8kg (8.38 lbs)			3.75kg (8.33 lbs)		
REGULATOR	-			EXTERNALLY ADJUSTABLE			EXTERNALLY ADJUSTABLE			EXTERNALLY ADJUSTABLE		

FACTOR BP
* Velocity and Energy levels are stable shots at **150 bar** regulator pressure

FACTOR RC
* Velocity and Energy levels are stable shots at **140 bar** regulator pressure

FACTOR FT
* Velocity and Energy levels are stable shots at **125 bar** regulator pressure

*The above velocity rates may differ depending on the pellet weight & shape, temperature, elevation, as well as other factors. The above velocity rates reflect the product's maximum velocity. Velocity rates are determined by the laws of the importing country. If there are muzzle energy/velocity restrictions in your country, then this product was produced in compliance with these related muzzle energy / velocity laws - resulting in a lower muzzle velocity.

**Energy Range with "min to max" hammer preload and regulator at 140 bar

Power Settings	FACTOR Recommended Energy**			FACTOR RC Recommended Energy**			FACTOR BP Recommended Energy**			FACTOR FT Recommended Energy**		
	.45 mm/ .177 cal	5.5 mm/ .22 cal	6.35 mm/ .25 cal	5.5 mm/ .22 cal	6.35 mm/ .25 cal	4.5 mm/ .177 cal	5.5 mm/ .22 cal	6.35 mm/ .25 cal	4.5 mm/ .177 cal	5.5 mm/ .22 cal	6.35 mm/ .25 cal	
3	20 -36 j	35.8-51 j	38-57 j	19- 26.5 j	27- 45.3 j	31.5- 25 j	41.5- 50.5 j	41.3- 56.4 j	14.6-28.7 j	20.4-36.5 j	23.8-41.3 j	
2	11 -30.5 j	28-39 j	30.5 -41.5 j	18- 25 j	23- 31 j	25- 21 j	31- 35 j	33- 38 j	11.7-20.1 j	16.4-26.8 j	13.8-27.7 j	
1	9.4 -18.8 j	19- 22.9 j	18- 21.5 j	12- 14.5 j	12.6- 15.6 j	14.6- 16.6 j	17.5- 20.4 j	21.5- 24 j	7.9-11.3 j	10.2-15.4 j	8.2-13.2 j	

TECHNICAL SPECIFICATIONS

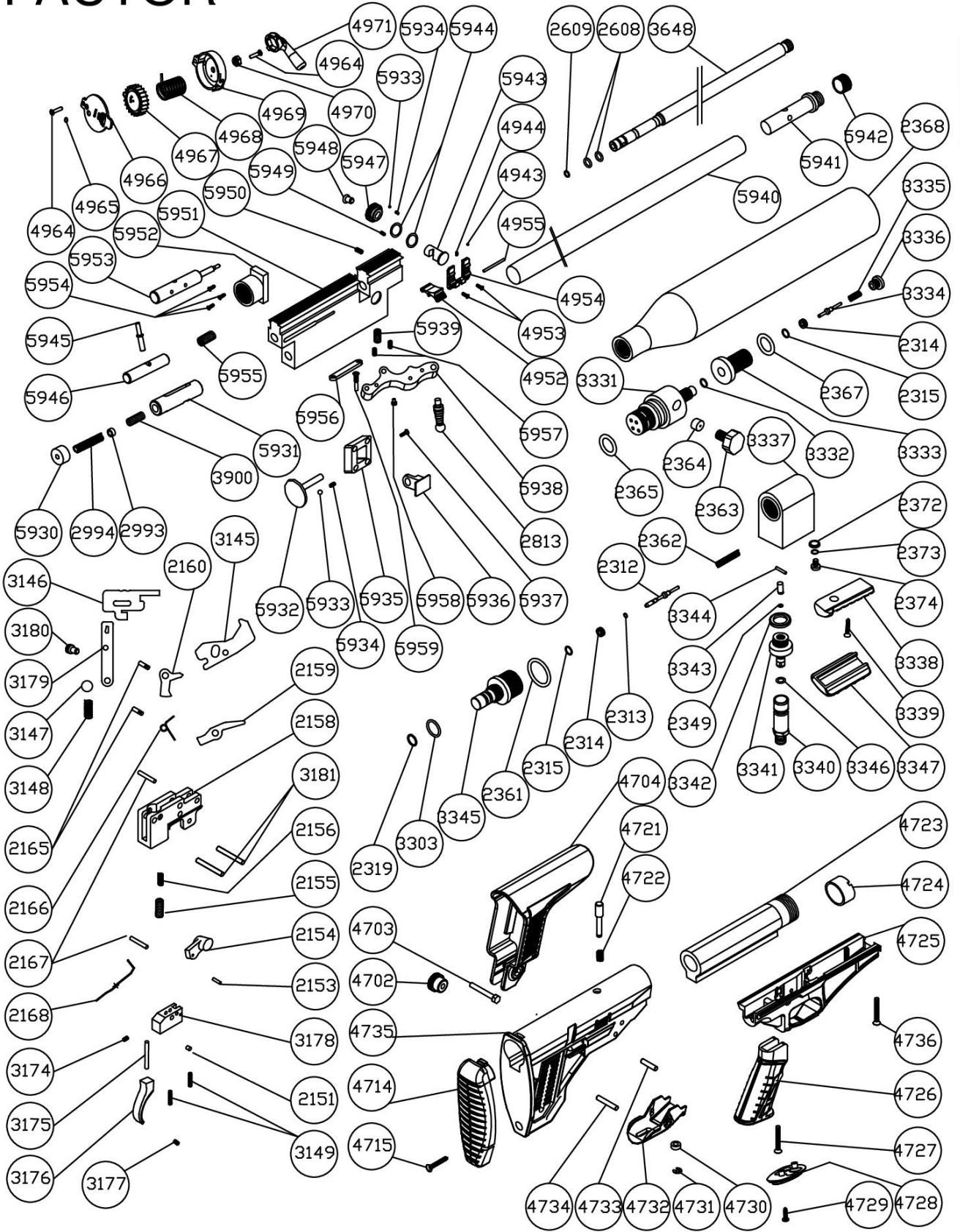
MODEL		FACTOR SNIPER L				FACTOR SNIPER S									
CALIBER	5.5 mm/ .22 cal		6.35 mm/ .25 cal		7.62 mm/ .30 cal		9 mm/ .35 cal		.45 mm/ .177 cal		5.5 mm/ .22 cal		6.35 mm/ .25 cal		
	318m/s (1050fps)		325m/s (1075fps)		285m/s (940fps)		293m/s (970fps)		306m/s (1040 fps)		288m/s (1000 fps)		318m/s (900 fps)		
MAX. MUZZLE VELOCITY	40 gr slug		45 gr slug		80 gr slug		81 gr pellet		15 gr slug		29 gr slug		45 gr slug		
	up to 133		up to 156		up to 213		up to 229		up to 48,7		up to 87		up to 109		
ENERGY	up to 98		up to 115		up to 157		up to 169		up to 36		up to 64.5		up to 80		
	21-45		19-39		16-33		13		24		21-45		19-39		
MAGAZINE CAPACITY		700cc (carbon fiber)				480 cc(carbon fiber)									
AIR TUBE VOLUME		300 BAR				300 BAR									
FILL PRESSURE		300 BAR				300 BAR									
NUMBER OF SHOTS AT OPTIMAL VELOCITY		100 (22 gr.pellet at 1100 fps)		80 (33.95 gr. at pellet 1000 fps)		70 (46.3 gr. at pellet 1000 fps)		70 (81 gr. at pellet 800 fps)		75 (9.5 gr.pellet at 1150 fps)		75 (18, 13 gr.pellet at 1050 fps)		60 (33.95 gr. at pellet 900 fps)	
STOCK		Mil Spec Modular Precision Buttstock and Pistol Grip				Mil Spec Modular Precision Buttstock and Pistol Grip									
OVERALL LENGHT		1180mm (46.5") Stock Shortened 1260mm (49.6") Stock Extended				1005 mm (46.5") Stock Shortened 1085 mm (49.6") Stock Extended									
BARREL LENGHT		760 mm (30")				585 mm (23")									
WEIGHT		5kg (11.1lbs)				4.6kg (10,2 lbs)									
REGULATOR		EXTERNALLY ADJUSTABLE				EXTERNALLY ADJUSTABLE									

FACTOR SNIPER L FACTOR SNIPER S

* Velocity and Energy levels are stable shots at **140 bar** regulator pressure

*Velocity results may vary as much as 20% due to pellet weight, pellet shape, temperature, elevation, as well as other factors.

FACTOR



FACTOR PART LIST

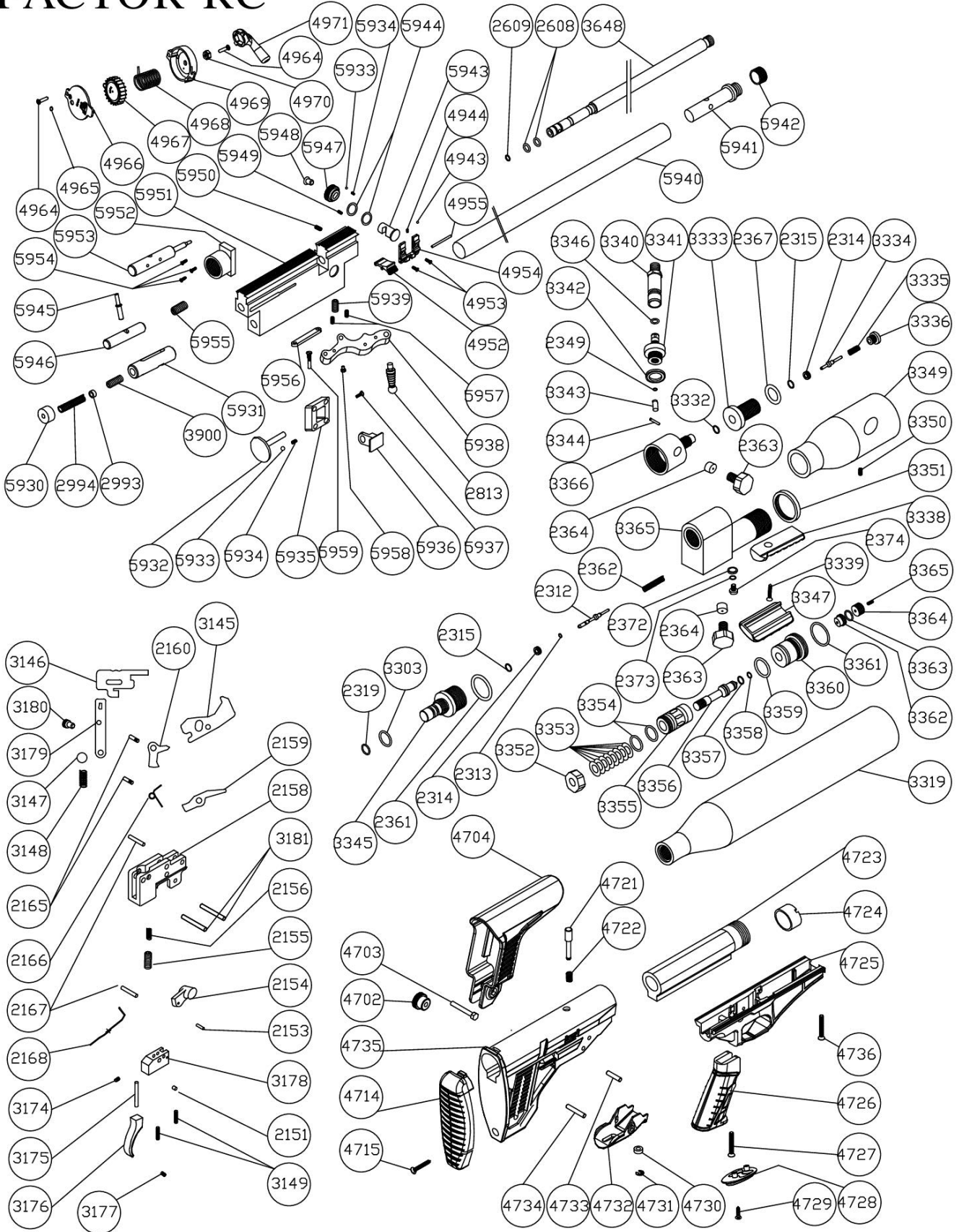
Part Code

FACTOR PART LIST

Part Code

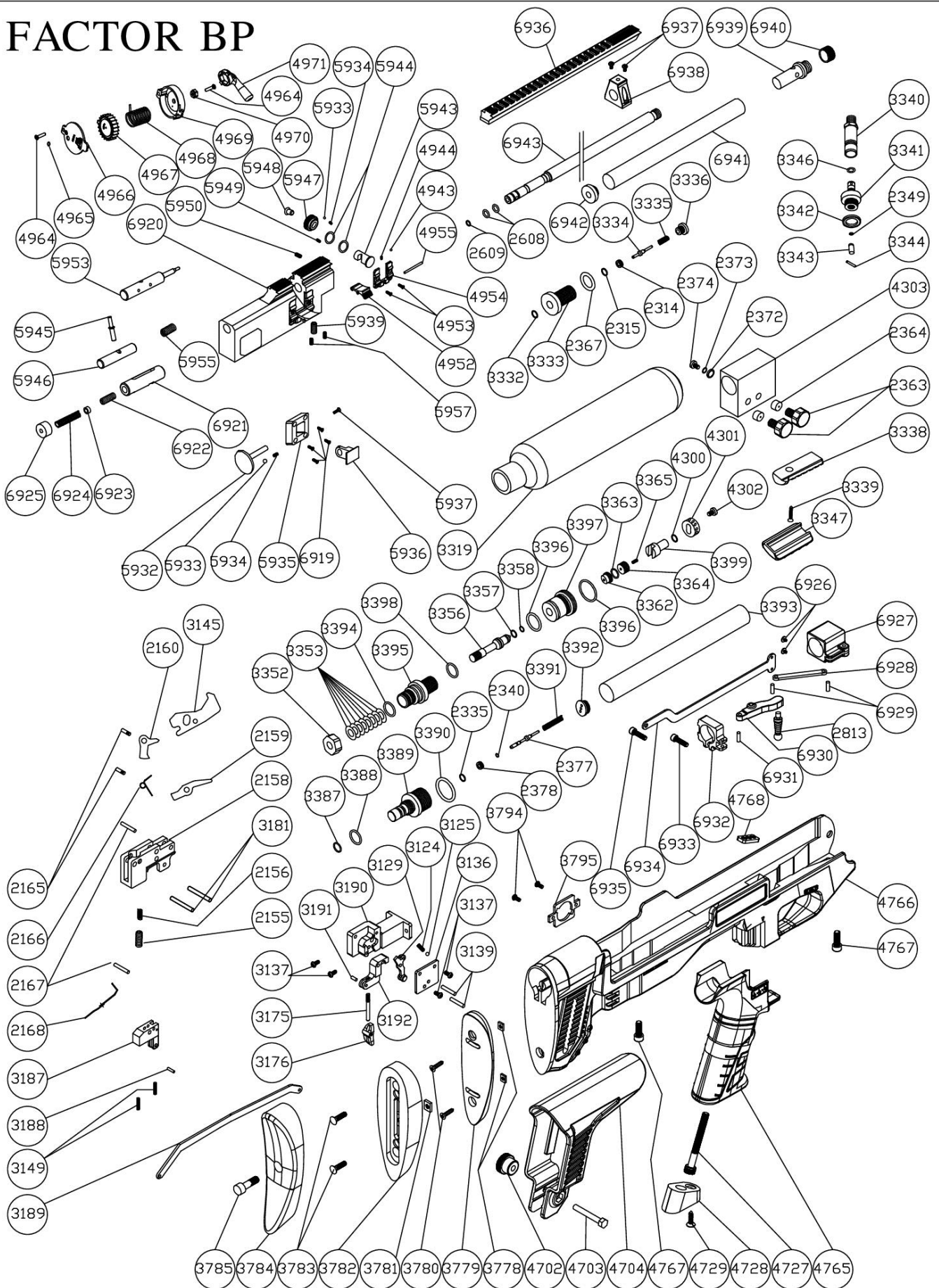
FACTOR STOCK GROUP	2700-56	TRIGGER GROUP	2150-17
STOCK CHEEK NUT	4702	FASTENING PLASTIC	2151
STOCK CHEEK SCREW	4703	DROP SAFETY PIN	2153
STOCK CHEEK	4704	DROP SAFETY	2154
BUTT PLATE	4714	TRIGGER PULL ADJUSTMENT SCREW	2155
BUTT PLATE SCREW	4715	TRIGGER PULL ADJUSTMENT SPRING	2156
ADJUST PIN	4721	TRIGGER CASE	2158
ADJUST PIN SPRING	4722	SEAR_3	2159
STOCK MOVEMENT PIN	4723	SEAR_2	2160
FASTENING NUT	4724	SEAR PIN	2165
TRIGGER GUARD	4725	SEAR_2 SPRING	2166
GRIP	4726	TRIGGER PIN	2167
GRIP CONNECTION SCREW	4727	DROP SAFETY SPRING	2168
GRIP COVER	4728	SEAR_1	3145
GRIP COVER SCREW	4729	SAFETY	3146
ADJUST PIN WASHER	4730	SAFETY BALL	3147
ADJUST PIN CLIP	4731	SAFETY SPRING	3148
ADJUST BUTTON	4732	TRIGGER TRAVEL SCREW	3149
STOCK STOP PIN	4733	M4X4 SCREW	3174
ADJUST BUTTON PIN	4734	TRIGGER PIN	3175
STOCK	4735	TRIGGER	3176
TRIGGER GUARD SCREW	4736	M3X3 SCREW	3177
MECHANISM GROUP	2900-20	TRIGGER BUDY	3178
8*1,5 O-RING NBR 70	2608	SAFETY LEVER	3179
BARREL O-RING		SAFETY BALL	3180
609-1 4,5 CAL 4.5X1.5 NBR70	2609-1	TRIGGER CONNECTION PIN	3181
609-2 5,5 CAL 5.5X1.5 NBR70	2609-2	CYLINDER GROUP	2300-22
609-3 6,35CAL 6,35*1,5 NBR 70	2609-3	AIR DISCHARGE PIN	2312
LEVER EXTENTION	2813	1,8*1 O-RING	2313
HAMMER BRUSH	2993	AIR DISCHARGE TAPPET	2314
HAMMER SPRING	2994	7*1 O-RING	2315
BARREL		9*2,5 O-RING	2319
4,5 CAL	3648-1	2*1.5 O-RING	2349
5,5 CAL	3648-2	AIR INTAKE VALVE O-RING	2361
6,35 CAL	3648-3	AIR DISCHARGE SPRING	2362
HAMMER SCREW	3900	MANOMETER	2363
MAGAZIN HOLDER BALL	4943	MANOMETER PLASTIC	2364
MAGAZIN HOLDER SPRING	4944	20*3 O-RING	2365
MAGAZIN HOLDER PART	4952	AIR CYLINDER O-RING	2367
MAGAZIN HOLDER SCREW	4953	AIR CYLINDER (500 cc)	2368
MAGAZIN HOLDER BODY	4954	AIR DISCHARGE WASHER	2372
MAGAZIN HOLDER PART PIN	4955	AIR DISCHARGE O-RING	2373
MAGAZIN COVER SCREW	4964	AIR DISCHARGE SCREW	2374
4X2 NBR 70 O-RING	4965	14*1,5 ORING	3303
MAGAZIN COVER	4966	AIR TUBE CONNECTION PIN	3331
PELLET HOUSE	4967	8X2 NBR90 O-RING	3332
MAGAZIN SPRING	4968	AIR TUBE COVER	3333
MAGAZIN BODY	4969	TUBE AIR INTAKE VALVE PIN	3334
PELLET HOUSE HOLDER	4970	TUBE AIR INTAKE VALVE PIN SPRING	3335
MAGAZIN TOOL	4971	TUBE AIR INTAKE VALVE COVER	3336
SPRING COVER	5930	VALVE BUDY	3337
HAMMER	5931	LAMB HOLDER	3338
HAMMER SPRING ADJUST ELEVATOR	5932	LAMB HOLDER SCREW	3339
3 BALL	5933	AIR CHARGE FIXTURE	3340
BALL SPRING	5934	AIR INTAKE VALVE	3341
HAMMER SPRING ADJUST BUDY	5935	WASHER	3342
HAMMER SPRING ADJUST PART	5936	AIR INTAKE TAPPET	3343
HAMMER SPRING ADJUST ELEVATOR SCREW	5937	AIR INTAKE VALVE PIN	3344
LEVER	5938	AIR DISCHARGE VALVE	3345
M6X8 SCREW	5939	6X2 NBR90 O-RING	3346
BARREL HOLDER	5940	LAMB HOLDER GUARD	3347
BARREL HOLDER CONNECTION PART	5941		
BARREL COVER	5942	4,5 CAL	5953-1
SPEED ADJUST PART	5943	5,5 CAL	5953-2
6.35X 1.5 NBR 70 O-RING	5944	6,35 CAL	5953-3
PELLET PUSHER SCREW	5945	M4X10 SCREW	5954
MOVEMENT PART	5946	PELLET PUSHER SCREW	5955
SPEED ADJUST BUTTON	5947	LEVER SHEET METAL	5956
SPEED ADJUST BUTTON SCREW	5948	CYLINDER CONNECTION SCREW	5957
M4X8 SCREW	5949	LEVER SCREW	5958
BARREL CONNECTION SCREW	5950	LEVER CONNECTION SCREW	5959
MECHANISM	5951		
BARREL CONNECTION PART	5952		

FACTOR RC



FACTOR RC PART LIST		Part Code	FACTOR RC PART LIST		Part Code
STOCK GROUP		2700-56	TRIGGER GROUP		2150-17
STOCK CHEEK NUT	4702		FASTENING PLASTIC	2151	
STOCK CHEEK SCREW	4703		DROP SAFETY PIN	2153	
STOCK CHEEK	4704		DROP SAFETY	2154	
BUTT PLATE	4714		TRIGGER PULL ADJUSTMENT SCREW	2155	
BUTT PLATE SCREW	4715		TRIGGER PULL ADJUSTMENT SPRING	2156	
ADJUST PIN	4721		TRIGGER CASE	2158	
ADJUST PIN SPRING	4722		SEAR_3	2159	
STOCK MOVEMENT PIN	4723		SEAR_2	2160	
FASTENING NUT	4724		SEAR PIN	2165	
TRIGGER GUARD	4725		SEAR_2 SPRING	2166	
GRIP	4726		TRIGGER PIN	2167	
GRIP CONNECTION SCREW	4727		DROP SAFETY SPRING	2168	
GRIP COVER	4728		SEAR_1	3145	
GRIP COVER SCREW	4729		SAFETY	3146	
ADJUST PIN WASHER	4730		SAFETY BALL	3147	
ADJUST PIN CLIP	4731		SAFETY SPRING	3148	
ADJUST BUTTON	4732		TRIGGER TRAVEL SCREW	3149	
STOCK STOP PIN	4733		M4X4 SCREW	3174	
ADJUST BUTTON PIN	4734		TRIGGER PIN	3175	
STOCK	4735		TRIGGER	3176	
TRIGGER GUARD SCREW	4736		M3X3 SCREW	3177	
MECHANISM GROUP	2900-20		TRIGGER BUDY	3178	
8*1,5 O-RING NBR 70	2608		SAFETY LEVER	3179	
BARREL O-RING			SAFETY BALL	3180	
609-1 4,5 CAL 4.5X1.5 NBR70	2609-1		TRIGGER CONNECTION PIN	3181	
609-2 5,5 CAL 5.5X1.5 NBR70	2609-2		CYLINDER GROUP	2300-23	
609-3 6,35CAL 6,35*1,5 NBR 70	2609-3		AIR DISCHARGE PIN	2312	
LEVER EXTENTION	2813		1,8*1 O-RING	2313	
HAMMER BRUSH	2993		AIR DISCHARGE TAPPET	2314	
HAMMER SPRING	2994		7*1 O-RING	2315	
BARREL			9*2,5 O-RING	2319	
4,5 CAL	3648-1		2*1.5 O-RING	2349	
5,5 CAL	3648-2		AIR INTAKE VALVE O-RING	2361	
6,35 CAL	3648-3		AIR DISCHARGE SPRING	2362	
HAMMER SCREW	3900		MANOMETER	2363	
MAGAZIN HOLDER BALL	4943		MANOMETER PLASTIC	2364	
MAGAZIN HOLDER SPRING	4944		AIR CYLINDER O-RING	2367	
MAGAZIN HOLDER PART	4952		AIR DISCHARGE WASHER	2372	
MAGAZIN HOLDER SCREW	4953		AIR DISCHARGE O-RING	2373	
MAGAZIN HOLDER BODY	4954		AIR DISCHARGE SCREW	2374	
MAGAZIN HOLDER PART PIN	4955		14*1,5 ORING	3303	
MAGAZIN COVER SCREW	4964		AIR CYLINDER	3309	
4X2 NBR 70 O-RING	4965		8X2 NBR90 O-RING	3332	
MAGAZIN COVER	4966		AIR TUBE COVER	3333	
PELLET HOUSE	4967		TUBE AIR INTAKE VALVE PIN	3334	
MAGAZIN SPRING	4968		TUBE AIR INTAKE VALVE PIN SPRING	3335	
MAGAZIN BODY	4969		TUBE AIR INTAKE VALVE COVER	3336	
PELLET HOUSE HOLDER	4970		LAMB HOLDER	3338	
MAGAZIN TOOL	4971		LAMB HOLDER SCREW	3339	
SPRING COVER	5930		AIR CHARGE FIXTURE	3340	
HAMMER	5931		AIR INTAKE VALVE	3341	
HAMMER SPRING ADJUST ELEVATOR	5932		WASHER	3342	
3 BALL	5933		AIR INTAKE TAPPET	3343	
BALL SPRING	5934		AIR INTAKE VALVE PIN	3344	
HAMMER SPRING ADJUST BUDY	5935		AIR DISCHARGE VALVE	3345	
HAMMER SPRING ADJUST PART	5936		6X2 NBR90 O-RING	3346	
HAMMER SPRING ADJUST ELEVATOR SCREW	5937		LAMB HOLDER GUARD	3347	
LEVER	5938		VALVE BUDY	3348	
M6X8 SCREW	5939		MANOMETER GUARD	3349	
BARREL HOLDER	5940		MANOMETER GUARD SCREW	3350	
BARREL HOLDER CONNECTION PART	5941		TUBE CONNECTION PART NUT	3351	
BARREL COVER	5942		REGULATOR NUT	3352	
SPEED ADJUST PART	5943		REGULATOR SPRING	3353	
6.35X 1.5 NBR 70 O-RING	5944		14X1.78 O-RING NBR90	3354	
PELLET PUSHER SCREW	5945		REGULATOR ADJUST NUT	3355	
MOVEMENT PART	5946		REGULATOR PIN	3356	
SPEED ADJUST BUTTON	5947		6X2 O-RING NBR70	3357	
SPEED ADJUST BUTTON SCREW	5948		4X2 O-RING NBR70	3358	
M4X8 SCREW	5949		15X2.5 O-RING NBR70	3359	
BARREL CONNECTION SCREW	5950		REGULATOR COVER	3360	
MECHANISM	5951		20X3 O-RING NBR90	3361	
BARREL CONNECTION PART	5952		REGULATOR PLASTIC	3362	
			7X1 O-RING NBR70	3363	
4,5 CAL	5953-1		PLASTIC COVER	3364	
5,5 CAL	5953-2		M3X6 SCREW	3365	
6,35 CAL	5953-3		TUBE CONNECTION PART	3366	
M4X10 SCREW	5954				
PELLET PUSHER SCREW	5955		CYLINDER CONNECTION SCREW	5957	
LEVER SHEET METAL	5956		LEVER SCREW	5958	
			LEVER CONNECTION SCREW	5959	

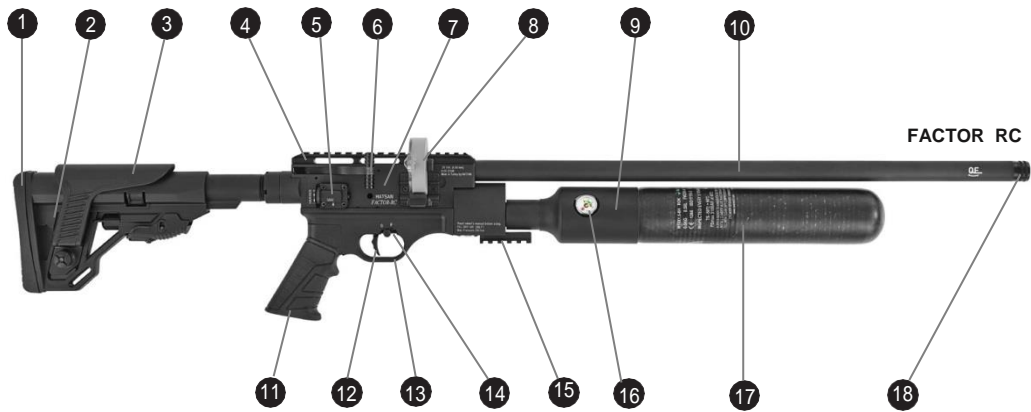
FACTOR BP



FACTOR BP PART LIST	Part Code	FACTOR BP PART LIST	Part Code
STOCK GROUP	2700-61	TRIGGER GROUP	2150-20
BUTT PLATE ADJUSTMENT NUT(RIGHT-LEFT)	3778	FASTENING PLASTIC	2151
CONSTANT BUTT PLATE	3779	DROP SAFETY PIN	2153
CONSTANT BUTT PLATE SCREW	3780	DROP SAFETY	2154
BUTT PLATE ADJUSTMENT NUT(UP-DOWN)	3781	TRIGGER PULL ADJUSTMENT SCREW	2155
RIGHT-LEFT ADJUSTMENT BUTT PLATE	3782	TRIGGER PULL ADJUSTMENT SPRING	2156
RIGHT-LEFT ADJUSTMENT SCREW	3783	TRIGGER CASE	2158
BUTT PLATE_SOFT	3784	SEAR_3	2159
BUTT PLATE_SOFT SCREW	3785	SEAR_2	2160
MAGAZIN TOOL HOLDER SCREW	3794	SEAR PIN	2165
MAGAZIN TOOL HOLDER	3795	SEAR_2 SPRING	2166
STOCK CHEEK NUT	4702	TRIGGER PIN	2167
STOCK CHEEK SCREW	4703	DROP SAFETY SPRING	2168
STOCK CHEEK	4704	SAFETY SPRING	3124
GRIP CONNECTION SCREW	4727	SAFETY BALL	3125
GRIP COVER	4728	SAFETY	3129
GRIP COVER SCREW	4729	TRIGGER COVER	3136
GRIP	4765	TRIGGER COVER SCREW	3137
STOCK	4766	TRIGGER PIN	3139
STOCK CONNECTION SCREW	4767	SEAR_1	3145
GRIP NUT	4768	TRIGGER TRAVEL SCREW	3149
MECHANISM GROUP	2900-25	TRIGGER PIN	3175
8*1.5 O-RING NBR 70	2608	TRIGGER CONNECTION PIN	3181
BARREL O-RING		TRIGGER-1	3187
4,5 CAL 4.5X1.5 NBR70	2609-1	TRIGGER SHEET METAL PIN	3188
5,5 CAL 5.5X1.5 NBR70	2609-2	TRIGGER SHEET METAL	3189
6,35CAL 6.35*1,5 NBR 70	2609-3	TRIGGER WEDGE	3190
.30 CAL 7.66X1.78 NBR70	2609-4	TRIGGER-2 PIN	3191
.35 CAL 8.78X 1.78 NBR70	2609-5	TRIGGER-2	3192
LEVER EXTENTION	2813	CYLINDER GROUP	2300-29
MAGAZIN HOLDER BALL	4943	AIR DISCHARGE TAPPET	2314
MAGAZIN HOLDER SPRING	4944	7*1 O-RING	2315
MAGAZIN HOLDER PART	4952	AIR DISCHARGE VALVE TAPPET O-RING	2335
MAGAZIN HOLDER SCREW	4953	3X1 O-RING	2340
MAGAZIN HOLDER BODY	4954	2*1.5 O-RING	2349
MAGAZIN HOLDER PART PIN	4955	MANOMETER (250 BAR)	2363
MAGAZIN COVER SCREW	4964	MANOMETER PLASTIC	2364
4X2 NBR 70 O-RING	4965	AIR DISCHARGE WASHER	2372
MAGAZIN COVER	4966	AIR DISCHARGE O-RING	2373
PELLET HOUSE	4967	AIR DISCHARGE SCREW	2374
MAGAZIN SPRING	4968	AIR DISCHARGE PIN	2312
MAGAZIN BODY	4969	AIR DISCHARGE TAPPET	2378
PELLET HOUSE HOLDER	4970	LAMB HOLDER	3338
MAGAZIN TOOL	4971	LAMB HOLDER SCREW	3339
HAMMER SPRING ADJUST ELEVATOR	5932	AIR CHARGE FIXTURE	3340
3 BALL	5933	AIR INTAKE VALVE	3341
BALL SPRING	5934	WASHER	3342
HAMMER SPRING ADJUST BUDY	5935	AIR INTAKE TAPPET	3343
HAMMER SPRING ADJUST PART	5936	AIR INTAKE VALVE PIN	3344
HAMMER SPRING ADJUST ELEVATOR SCREW	5937	6X2 NBR90 O-RING	3346
M6X8 SCREW	5939	REGULATOR NUT	3352
SPEED ADJUST PART	5943	REGULATOR SPRING	3353
6.35X 1.5 NBR 70 O-RING	5944	LAMB HOLDER GUARD	3347
PELLET PUSHER SCREW	5945	REGULATOR PIN	3356
MOVEMENT PART	5946	6X2 O-RING NBR70	3357
SPEED ADJUST BUTTON	5947	4X2 O-RING NBR70	3358
SPEED ADJUST BUTTON SCREW	5948	REGULATOR PLASTIC	3362
M4X8 SCREW	5949	7X1 O-RING NBR70	3363
BARREL CONNECTION SCREW	5950	PLASTIC COVER	3364
		M3X6 SCREW	3365
4,5 CAL	5953-1	9X3 O-RING NBR70	3387
5,5 CAL	5953-2	AIR DISCHARGE VALVE O-RING	3388
6,35 CAL	5953-3	AIR DISCHARGE VALVE	3389
.30 CAL	5953-4	AIR TUBE O-RING	3390
.35 CAL	5953-5	PIN SPRING	3391
PELLET PUSHER SCREW	5955	AIR DISCHARGE COVER	3392
CYLINDER CONNECTION SCREW	5957	AIR PRE-CHAMBER	3393
LEVER CONNECTION SCREW	5959	AIR PRE-CHAMBER O-RING	3394
HAMMER SPRING ADJUST BUDY SCREW	6919	AIR PRE-CHAMBER CONNECTION PART	3395
MECHANISM	6920	REGULATOR ADJUSTABLE PART O-RING	3396
HAMMER	6921	REGULATOR ADJUSTABLE PART	3397
HAMMER SCREW	6922	VALVE BUDDY O-RING	3398
HAMMER BRUSH	6923	REGULATOR ADJUSTABLE BUTTON PART	3399
HAMMER SPRING	6924	REGULATOR ADJUSTABLE BUTTON PART O-RING	4300
SPRING COVER	6925	REGULATOR ADJUSTABLE BUTTON	4301
SHEET METAL SCREW	6926	REGULATOR ADJUSTABLE BUTTON SCREW	4302
LEVER MOVEMENT PART	6927	VALVE BUDDY	4303
LEVER SHEET METAL	6928		
LEVER SHEET METAL PIN	6929	BARREL HOLDER CONNECTION PART	6939
LEVER	6930	BARREL COVER	6940
LEVER PIN	6931	BARREL HOLDER	6941
LEVER CONNECTION PART	6932	BARREL HOLDER BRUSH	6942
M6X15 SCREW	6933	BARREL	
LEVER MOVEMENT SHEET METAL	6934	4,5 CAL	6943-1
M6X12 SCREW	6935	5,5 CAL	6943-2
SCOPE LANE	6936	6,35 CAL	6943-3
CLEAT SCREW	6937	.30 CAL	6943-4
CLEAT	6938	.35 CAL	6943-5

FACTOR SNIPER PART LIST	Part Code	FACTOR SNIPER PART LIST	Part Code
STOCK GROUP	2700-63	TRIGGER GROUP	2150-17
FASTENING NUT	4724	FASTENING PLASTIC	2151
PLASTIC GRIP	4726	DROP SAFETY PIN	2153
GRIP CONNECTION SCREW	4727	DROP SAFETY	2154
GRIP COVER	4728	TRIGGER PULL ADJUSTMENT SCREW	2155
GRIP COVER SCREW	4729	TRIGGER PULL ADJUSTMENT SPRING	2156
TRIGGER GUARD SCREW	4736	TRIGGER CASE	2158
SNIPPER STOCK	4715	SEAR_3	2159
ADJUSTABLE HAND GRIP	4721	SEAR_2	2160
STOCK MOVEMENT PIN	4722	SEAR PIN	2165
FOREND CONNECTION SCREW	4723	SEAR_2 SPRING	2166
FOREND	4724	TRIGGER PIN	2167
TRIGGER GUARD	4725	DROP SAFETY SPRING	2168
WOODEN GRIP	4726	SEAR_1	3145
MECHANISM GROUP	2900-26	SAFETY	3146
8*1.5 O-RING NBR 70	2608-1	SAFETY BALL	3147
11X1.5 O-RING NBR 70	2608-2	SAFETY SPRING	3148
BARREL O-RING		TRIGGER TRAVEL SCREW	3149
4,5 CAL 4.5X1.5 NBR70	2609-1	M4X4 SCREW	3174
5,5 CAL 5.5X1.5 NBR70	2609-2	TRIGGER PIN	3175
6,35CAL 6,35*1,5 NBR 70	2609-3	TRIGGER	3176
.30 CAL 7.62X1.78 NBR 70	2609-4	M3X3 SCREW	3177
.35 CAL 8.78X1.78 NBR70	2609-5	TRIGGER BUDY	3178
MAGAZIN HOLDER BALL	4943	SAFETY LEVER	3179
MAGAZIN HOLDER SPRING	4944	SAFETY BALL	3180
MAGAZIN HOLDER PART	4952	TRIGGER CONNECTION PIN	3181
MAGAZIN HOLDER SCREW	4953	CYLINDER GROUP	2300-31
MAGAZIN HOLDER BODY	4954	AIR DISCHARGE TAPPET	2314
MAGAZIN HOLDER PART PIN	4955	7*1 O-RING	2315
MAGAZIN COVER SCREW	4964	9*2.5 O-RING	2319
4X2 NBR 70 O-RING	4965	AIR DISCHARGE VALVE TAPPET O-RING	2335
MAGAZIN COVER	4966	3X1 O-RING	2340
4,5 CAL	4966-1	2*1.5 O-RING	2349
5,5 CAL	4966-2	MANOMETER PLASTIC	2364
6,35 CAL	4966-3	AIR CYLINDER O-RING	2367
.30 CAL	4966-4	AIR DISCHARGE WASHER	2372
.35 CAL	4966-5	AIR DISCHARGE O-RING	2373
PELLET HOUSE	4967	AIR DISCHARGE SCREW	2374
4,5 CAL	4967-1	AIR DISCHARGE PIN	2377
5,5 CAL	4967-2	AIR DISCHARGE TAPPET	2378
6,35 CAL	4967-3	AIR CYLINDER (480CC 300 BAR)	3320
.30 CAL	4967-4	MANOMETER	3321
.35 CAL	4967-5	8X2 NBR90 O-RING	3332
MAGAZIN SPRING	4968	AIR TUBE COVER	3333
MAGAZIN BODY	4969	TUBE AIR INTAKE VALVE PIN	3334
4,5 CAL	4969-1	TUBE AIR INTAKE VALVE PIN SPRING	3335
5,5 CAL	4969-2	TUBE AIR INTAKE VALVE COVER	3336
6,35 CAL	4969-3	LAMB HOLDER	3338
.30 CAL	4969-4	LAMB HOLDER SCREW	3339
.35 CAL	4969-5	AIR CHARGE FIXTURE	3340
PELLET HOUSE HOLDER	4970	AIR INTAKE VALVE	3341
MAGAZIN TOOL	4971	WASHER	3342
HAMMER SPRING ADJUST ELEVATOR	5932	AIR INTAKE TAPPET	3343
3 BALL	5933	AIR INTAKE VALVE PIN	3344
BALL SPRING	5934	6X2 NBR90 O-RING	3346
HAMMER SPRING ADJUST BUDY	5935	LAMB HOLDER GUARD	3347
HAMMER SPRING ADJUST PART	5936	REGULATOR NUT	3352
HAMMER SPRING ADJUST ELEVATOR SCREW	5937	REGULATOR SPRING	3353
LEVER	5938	REGULATOR PIN	3356
PELLET PUSHER SCREW	5945	6X2 O-RING NBR70	3357
MOVEMENT PART	5946	4X2 O-RING NBR70	3358
BARREL CONNECTION SCREW	5950	REGULATOR PLASTIC	3362
BARREL CONNECTION PART	5952	7X1 O-RING NBR70	3363
		PLASTIC COVER	3364
4,5 CAL	5953-1	M3X6 SCREW	3365
5,5 CAL	5953-2	9X3 O-RING NBR70	3387
6,35 CAL	5953-3	AIR DISCHARGE VALVE O-RING	3388
.30 CAL	5953-4	PIN SPRING	3391
.35 CAL	5953-5	AIR DISCHARGE COVER	3392
M4X10 SCREW	5954	REGULATOR PLASTIC	3362
PELLET PUSHER SCREW	5955	7X1 O-RING NBR70	3363
LEVER SHEET METAL	5956	PLASTIC COVER	3364
CYLINDER CONNECTION SCREW	5957	M3X6 SCREW	3365
LEVER SCREW	5958	REGULATOR ADJUSTABLE PART O-RING	3396
LEVER CONNECTION SCREW	5959	REGULATOR ADJUSTABLE PART	3397
HAMMER SPRING ADJUST BUDY SCREW	6919	VALVE BUDDY O-RING	3398
HAMMER	6921	REGULATOR ADJUSTABLE BUTTON PAI	3399
HAMMER SCREW	6922	REGULATOR ADJUSTABLE BUTTON PAI	4300
HAMMER BRUSH	6923	REGULATOR ADJUSTABLE BUTTON	4301
SPRING COVER	6925	REGULATOR ADJUSTABLE BUTTON SCI	4302
BARREL HOLDER CONNECTION PART	6939	AIR DISCHARGE VALVE	4304
BARREL COVER	6940	AIR DISCHARGE VALVE	4305
LEVER SCREW	6944	AIR PRE-CHAMBER	4306
LEVER EXTENTION	6945	AIR PRE-CHAMBER CONNECTION PART	4307
TOP LEVER EXTENTION	6946	VALVE BUDDY	4308
M10X10 SCREW	6947	AIR TUBE CONNECTION PART	4309
SNIPPER S BARREL	6948	AIR TUBE CONNECTION PART O-RING	4310
4,5 CAL	6948-1	AIR PRE-CHAMBER O-RING	4311
5,5 CAL	6948-2	AIR CYLINDER (700 CC 300 BAR)	4312
6,35 CAL	6948-3		
SNIPPER L BARREL	6949		
5,5 CAL	6949-1		
6,35 CAL	6949-2		
.30 CAL	6949-3	MECHANISM	6954
.35 CAL	6949-4	MECHANISM SNIPPER S	6954-1
BARREL HOLDER	6950	MECHANISM SNIPPER L	6954-2
BARREL HOLDER BRUSH	6951	HAMMER SPRING	6955
SNIPPER S BARREL HOLDER	6952	HAMMER SPRING FOR SNIPPER S	6955-1
SNIPPER L BARREL HOLDER	6953	HAMMER SPRING FOR SNIPPER L	6955-2

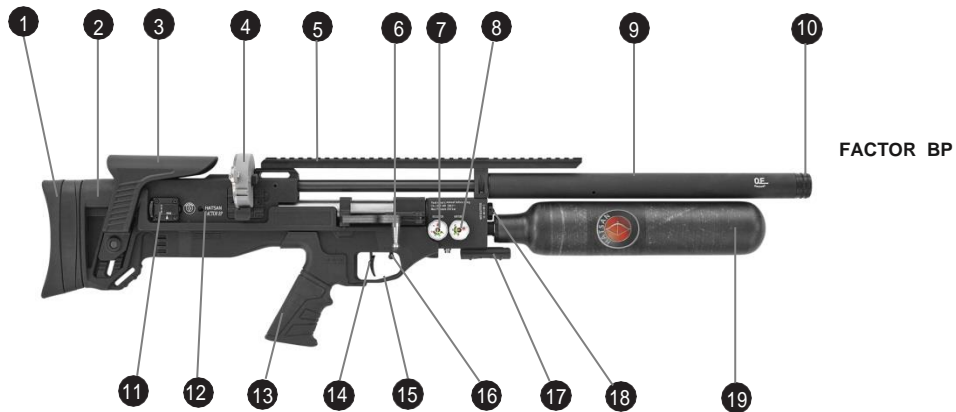
BASIC PARTS OF YOUR GUN



- 1. Butt Pad
- 2. Stock
- 3. Cheek Piece
- 4. Scope Rail (Upper Picatinny Rail)
- 5. Hammer Preload Adjustment Knob
- 6. Cocking Handle

- 7. Receiver
- 8. Magazine
- 9. Regulator
- 10. Barrel With Shroud
- 11. Grip
- 12. Trigger

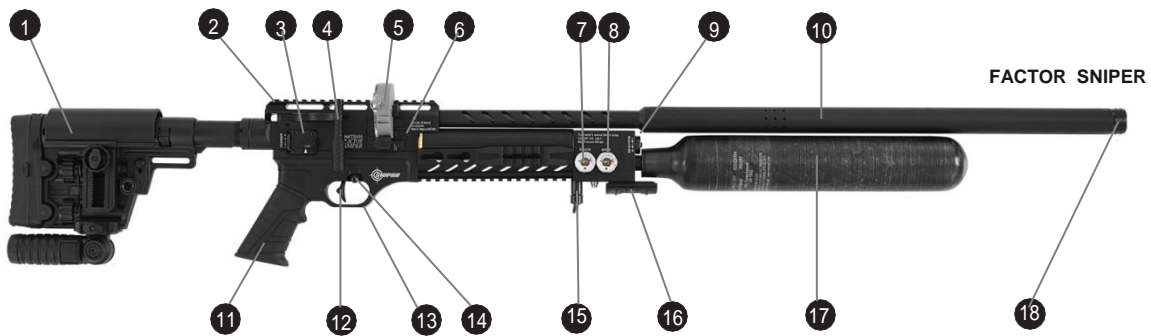
- 13. Trigger Guard
- 14. Safety Button
- 15. Lower Picatinny Rail
- 16. Air Gauge
- 17. Air Tube
- 18. Muzzle



- 1. Adjustable Butt Pad
- 2. Stock
- 3. Cheek Piece
- 4. Magazine
- 5. Scope Rail (Upper Picatinny Rail)
- 6. Cocking Handle

- 7. Regulator Gauge
- 8. Air Gauge
- 9. Barrel With Shroud
- 10. Muzzle
- 11. Hammer Preload Adjustment Knob
- 12. Receiver

- 13. Grip
- 14. Trigger
- 15. Trigger Guard
- 16. Safety Button
- 17. Lower Picatinny Rail
- 18. Regulator
- 19. Air Tube



- 1. Mil-Spec Modular Precision Buttstock
- 2. Scope Rail (Upper Picatinny Rail)
- 3. Hammer Preload Adjustment Knob
- 4. Cocking Handle
- 5. Magazine
- 6. Receiver

- 7. Regulator Gauge
- 8. Air Gauge
- 9. Regulator
- 10. Barrel With Shroud
- 11. Grip
- 12. Trigger

- 13. Trigger Guard
- 14. Safety Button
- 15. QD Sling Swivel
- 16. Lower Picatinny Rail
- 17. Air Tube
- 18. Muzzle

MANUAL SAFETY (FOR ALL FACTOR AIR RIFLES)

Safety button can be set to 'ON' and 'OFF' position manually.

- To set the safety to 'ON', pull safety lever to the rear (towards the S letter). In this position, the trigger cannot be pulled and the air gun cannot be fired. (Fig. 1)
- To move the safety to 'OFF', push safety lever forward (towards the F letter). In this position, the airgun is ready to shoot. (Fig. 2)



Fig. 1

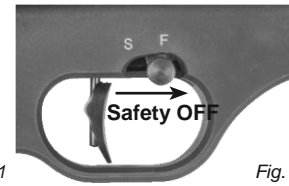


Fig. 2

CAUTION: Until you are actually ready to shoot, keep the safety in the "ON" position (Fig. 1).

ADJUSTABLE TRIGGER (FOR ALL FACTOR AIR RIFLES)

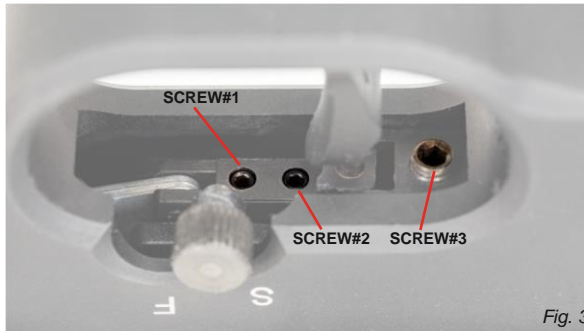


Fig. 3

Your air rifle is equipped with Hatsan's 2-stage adjustable Quattro Trigger. This trigger will allow precise adjustments for travel, engagement, and pull force. The adjustment screws are accessed through openings in the bottom of the trigger guard. Use a 1.5mm and 2.5mm allen hex key to make adjustments.

The Quattro Trigger is adjustable as seen in Fig. 3

SCREW#1 adjusts the amount of overlap or depth of engagement of the sear. For less trigger travel prior to discharge, rotate SCREW#1 clockwise; and vice versa.

SCREW#2 adjusts the transition from 1st to 2nd stage. For a shorter 1st stage, rotate SCREW#2 clockwise; and vice versa.

SCREW#3 adjusts the trigger pull force. When this is turned clockwise, the force increases; and vice versa.

NOTE: Make only small changes to one adjuster at a time. Over-adjusting can render the trigger inoperable and may create a dangerous situation! Take note of the starting point of each adjuster so that you can return it to its original position if necessary.

HAMMER PRELOAD ADJUSTMENT (FOR ALL FACTOR AIR RIFLES)

Hatsan Factor series air rifles are equipped with an externally adjustable hammer preload. You can increase/decrease the muzzle energy by rotating the hammer preload adjustment knob to + / - positions respectively. (Fig. 4)



Fig. 4

ADJUSTABLE TRANSFER PORT (FOR FACTOR, FACTOR RC, FACTOR BP AND FACTOR FT)



Fig. 5

Hatsan Factor, Factor RC, Factor BP and Factor FT air rifles are equipped with an externally adjustable transfer port which can be adjusted 3 different power levels. To increase the muzzle energy, rotate the transfer port adjustment knob to a higher number. To decrease muzzle energy, rotate the transfer port adjustment knob to a lower number. (Fig. 5)

Transfer Port Adjustment Knob

REMOVABLE AIR BOTTLE (FOR ALL FACTOR AIR RIFLES)

Hatsan Factor series air rifles are equipped with removable air bottles. The bottle can be removed while charged.

- Be sure that the rifle is first not cocked or loaded. Slowly unscrew the bottle. (Fig. 6) A small amount of air will escape after the bottle has been unscrew a few turns - this is normal.
- Finish unscrewing the bottle to remove it. (Fig. 7)
- A spare bottle that has already been charged can be installed, or the same bottle can be re-installed.



Fig. 6



Fig. 7

ADJUSTABLE REGULATOR (FOR FACTOR RC, FACTOR BP, FACTOR FT, FACTOR SNIPER)

Hatsan Factor RC air rifles are equipped with an externally adjustable pressure regulator.

- In order to adjust the pressure in the regulator, first of all unscrew and remove the air bottle. Then, using the adjustment tool, open the bleed valve to vent the remaining air from the rifle. (Fig. 8)
- By means of the adjustment tool (supplied with your air rifle), rotate the regulator adjustment screw in the (+) direction to have more pressure in regulator and accordingly more muzzle energy. (Fig. 9)
- To lower the regulator pressure and accordingly less muzzle energy, rotate the regulator adjustment screw in the (-) direction. (Fig. 9A & 9B)

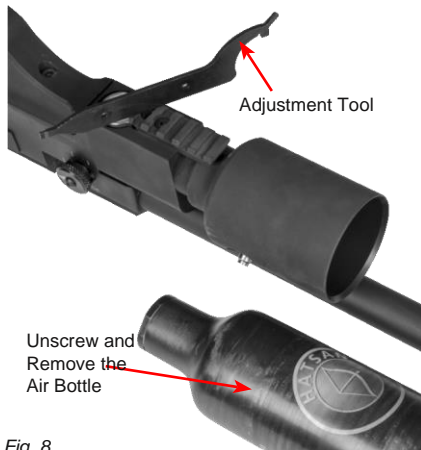


Fig. 8

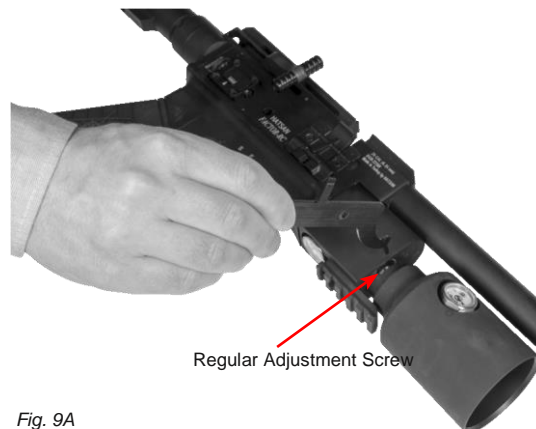


Fig. 9A
*FACTOR RC

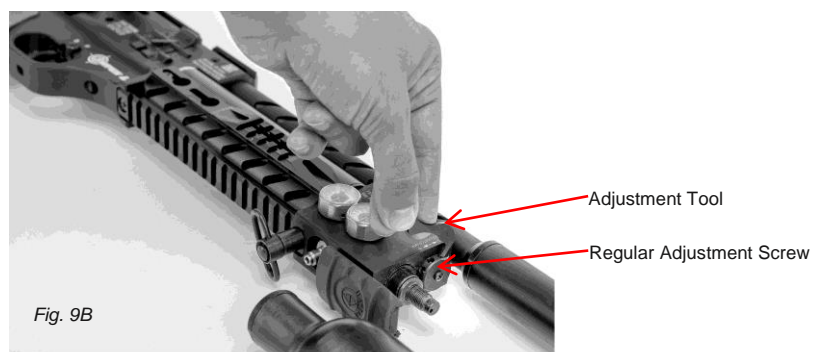


Fig. 9B

*FACTOR BP, FT, SNIPER

TRIGGER SHOE ADJUSTMENT (FOR ALL FACTOR AIR RIFLES)

Hatsan Factor series air rifles are equipped with a vertical and horizontal trigger shoe adjustment feature.

To adjust the vertical or horizontal position of the trigger shoe, loosen the screw located on the side of the trigger shoe and set trigger shoe at your desired vertical & horizontal location. Then tighten the screw. (Fig. 10)



Fig. 10

OPERATING INSTRUCTIONS (FOR ALL FACTOR AIR RIFLES)

Warning!

- Before filling the air cylinder; make sure the safety is in the ON position, no pellets are loaded in the air rifle and/or barrel and magazine is not mounted in the gun. If the air bottle is completely empty; fill in air bottle after cocking the gun and keeping the cocking handle/bolt lever open at the rear.
- Take all safety measures before filling the air bottle. It is compulsory for the user and bystanders to wear eye & ear protection when filling the air bottle.
- While filling in the air bottle; the pressure in it must be monitored from the air gauge of the hand pump or scuba charging kit. Do not look at the air gauge on the air rifle during filling process. Instead, reference the gauge on your fill device.
- Pull the cocking lever backwards until it stops and locks at the back. Keep the bolt lever locked at the rear. (Fig. 11) **THIS OPERATION COCKS THE TRIGGER MECHANISM/ HAMMER ASSEMBLY**
- Fit the female quick disconnect nozzle to the air-line of the charging equipment, which must incorporate a pressure gauge. Ensure both female disconnect nozzle and rifle male fitting are clear from dirt and gently push the nozzle into the filler hole as in Fig. 11A for Factor or Fig. 11B for Factor RC or Fig. 11C Factor Sniper .
- Fill the air tube up pressure quoted previously in this manual. (250 Bar). Do not exceed the maximum fill pressure as this will reduce the muzzle velocity of the pellets and may damage internal components, which may cause danger to you and others around you. When using a diver's bottle, refill the rifle slowly to prevent the heat created by the filling process from damaging the rifle's components. Undo the bleeder valve on the hose before disconnecting the female fitting from the male fitting on the rifle.



Fig. 11A



Fig. 11B



Fig. 11C

LOADING THE RIFLE AND SHOOTING (FOR ALL FACTOR AIR RIFLES)

1. The magazine is composed of a rear side (clear cover) and a front side. The magazine is designed to be allowed to fit only one way into the rifle.
2. Swing the clear cover counter-clockwise and open it. Place the winding tool onto the hexagonal hub on the back of the magazine. **(Fig. 13)**
3. With your thumb, twist the winding tool counter clockwise and hold it. With your other hand load one pellet (with its skirt upwards) in the magazine, inline with the opening of the magazine body. This will hold the magazine in the wound position. **(Fig. 14A)**
4. Load the remaining pellets into the other open locations in the magazine **(Fig. 14B)** and return the magazine cover to the fully-closed position. Be sure that the protrusion on the cover seats fully into the slot of the magazine body.
5. If you would like, you can load a second magazine and attach to magazines to each other as shown in **(Fig. 15)**
6. With the clear cover facing the butt of the rifle insert the magazine from the right side of the rifle and push it inwards all the way in until it's fully in place. **(Fig. 16)**
Make sure the magazine sits complete and correctly in its place as shown in **Fig. 17A** and **Fig. 17B DO NOT CLOSE LEVER UNTIL YOU ARE READY TO FIRE.**
7. Once you are ready to fire, close the lever and move it all the way forward. **(Fig. 18)**
8. Aim at your intended target, disengage the safety and get ready to shoot.
9. Pull the trigger and the rifle will fire.
10. To reload rifle, pull the cocking lever fully and close so the next pellet is indexed with the barrel. Then repeat above items 8 & 9.

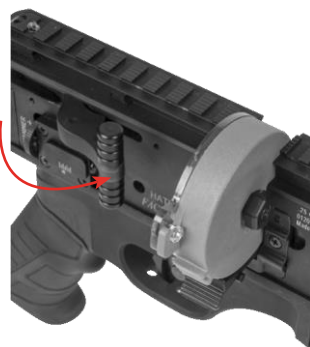
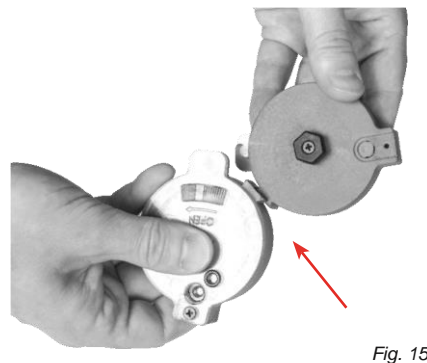
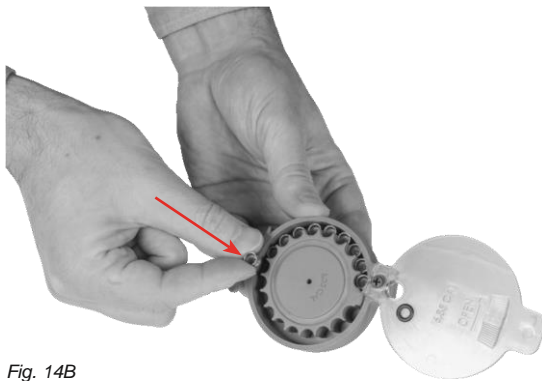
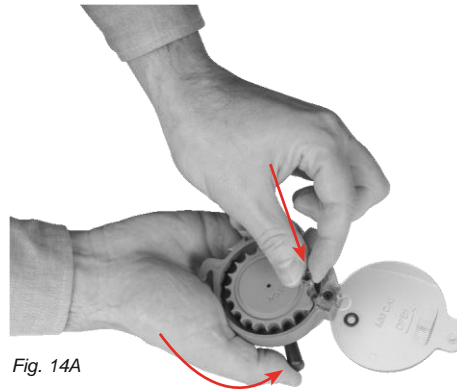
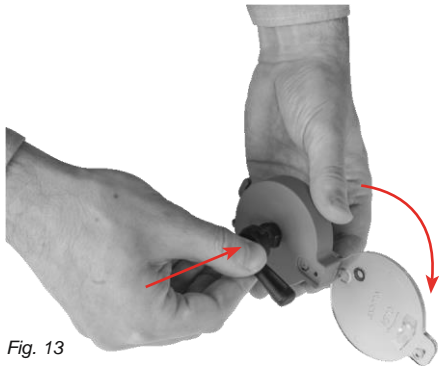


Fig. 18



Fig. 17A

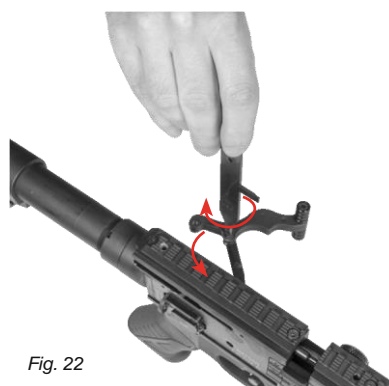
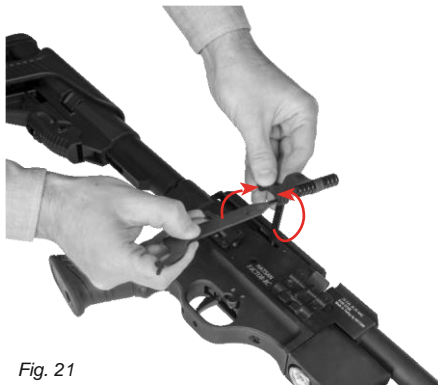
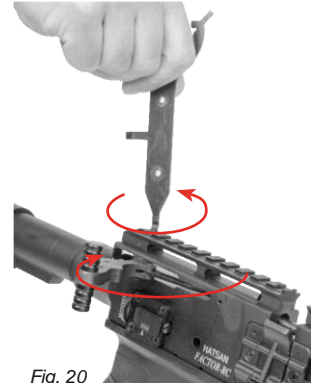


Fig. 17B

REVERSIBLE COCKING LEVER FOR AMBIDEXTROUS OPERATION (FOR ALL FACTOR AIR RIFLES)

The cocking lever can be assembled on the left hand side of the receiver for left hand shooters.

- Remove the plate located on the left hand side of the receiver by unscrewing the 2 screws. (Fig. 19)
- Open the cocking lever and, by means of the adjustment tool (supplied with your air rifle), remove the set-screw located on top of the receiver. (Fig. 20)
- Pull out the cocking lever, unscrew the connection screw between the cocking handle and linkage and remove the cocking handle from the lever. (Fig. 21)
- Push the lever to the left side of the receiver. Connect the cocking handle and linkage with the same screw as show in(Fig. 22)
- Push the lever into the receiver and screw back in the set-screw. (Fig. 23)
- Cocking lever is now assembled to the left hand side of the receiver.



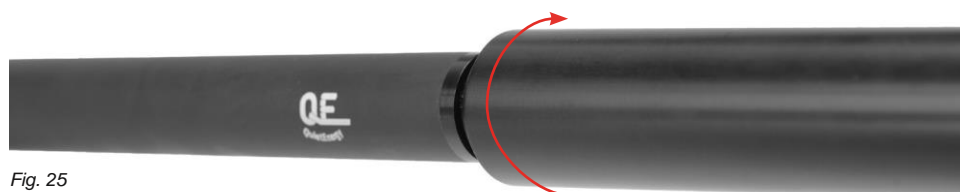
INSTALLING A MODERATOR (FOR ALL FACTOR AIR RIFLES)

Warning!

Know your local laws before installing a sound moderator on your airgun.

Hatsan Factor series air rifles are already equipped with Hatsan's QuietEnergy barrel technology, but an additional moderator can be installed if desired. The muzzle cap is removable and a 1/2" UNF threaded moderator can be installed in its place.

1. Turn the muzzle cap counter-clockwise to unscrew and remove it. (Fig. 24A & Fig. 24B)
2. Install your moderator by threading it on clockwise until tight. (Fig. 25)
3. Ensure that your moderator is in proper alignment with the barrel to avoid pellets impacting the inside of the device.



MAINTENANCE

Warning!

Never attempt to disassemble this rifle. Never fire the rifle when the air in the cylinder is removed. Failure to obey this instruction could result in damage to your rifle.

Never lubricate inside the barrel as this will affect the accuracy & grouping of the rifle in negative manner. Occasionally apply proper mineral based oils sparingly to the following parts:

- The trigger mechanism
- The pellet probe
- The cocking lever sliding surface

DO NOT OVER-LUBRICATE THE RIFLE!

- It is recommended to clean the barrel with a cleaning rod every 500-1000 shots. Never lubricate inside the barrel.
- Before you begin oiling or cleaning your air gun, always check to make sure it is unloaded.
- Always be sure your gun barrel is clean and not blocked.
- After cleaning ensure that no cleaning patch or other obstruction remains in the barrel.
- Annually, take your air gun to a gunsmith even if it seems to be working well, since some issues in your gun may not be apparent from external examination.
- Take your air gun to a gunsmith if water, sand, etc. enters the internal mechanism of the air gun, for complete cleaning.
- Dangerous conditions may occur if you do not keep your air gun clean and working properly.

QUICK FILL NOZZLE O-RINGS REPLACEMENT

- After a period of time, the O-rings on the fill nozzle will need to be replaced. The need for the replacement will become noticeable if air is heard leaking from the nozzle or the nozzle is ejected from the port while charging the rifle. Always replace both O-rings.

SAFETY MEASURES&WARNINGS

- This air gun will fire if cocked, loaded, safety disengaged and trigger pulled.
- Air guns are not toys. Never let young children use an air gun unsupervised. Adult supervision is strictly required during use. Misuse or careless use may cause serious injury or death.
- This is a high-powered airgun for use by those 16 years of age or older.
- Learn how your air gun operates and practice safe gun handling procedures before loading and using it.
- **ALWAYS USE EYE & HEARING PROTECTION AND MAKE BYSTANDERS USE THE SAME.** Failure to do so may result in eye injuries and permanent hearing loss.
- Do not point at anything you do not intend to shoot even though the gun is unloaded. Always keep the gun pointed in a safe direction.
- Never pull a gun toward you by the muzzle.
- Always aim at a safe target, taking care that it does not conceal any other object.
- Before you fire, consider where the pellet will travel should you miss your intended target, thus ensuring no damage or harm could result.
- Be sure of your target before you pull the trigger. Never shoot at sounds.
- When shooting, always have a safe shooting range, that is; have a safe area for shooting, a safe distance between you and the target, and a safe backstop to trap the pellets and hold the target.
- Do not fire at a target, which allows ricochets or deflections. Do not fire into or at water.
- Do not fire at or near power lines or insulators. Be especially careful in wooded areas where power lines may not be as visible.
- Do not load the gun until you are ready to shoot.
- Always keep your fingers away from the trigger & muzzle during cocking and handling.
- Do not walk, run or jump when carrying a loaded or cocked air gun. A loaded or a cocked gun should never be carried inside a vehicle, house, camp or public place. Never climb a tree or fence or jump a ditch with a loaded gun. In such a case, first unload it and hand the gun to a friend or place it on the ground on the other side of the obstacle before crossing yourself.
- When transporting the gun, keep it unloaded and 'on safe'.
- Always keep the gun 'on safe' until you are ready to shoot even if the gun is unloaded.
- Do not put the gun away loaded and unattended.
- Always check to see if the gun is 'on safe' and unloaded when getting it from another person or from storage.
- Always keep the air gun and/or pellets out of the reach of children. Keep the air gun and pellets in separate places, better if under lock and key.
- Do not attempt to disassemble or tamper with your gun. Use a competent gunsmith. Many air guns contain powerful springs or high pressure air cylinders which can cause serious injury if released in an uncontrolled manner.
- Always handle and treat your gun as though it were loaded.
- Improper use or handling of air guns is not the responsibility of the manufacturer or distributor, under any circumstances. The user is responsible for any harm, which may be caused.
- Think first, fire second. Don't rely on any mechanical safety. Half safe is not safe.
- Be safe not sorry. Respect other's property.
- Air guns should never be used under the influences of alcohol or drugs.
- Do not brandish or display this product in public – it could confuse people and may be a crime.
- Do not change the coloration and markings to make it look more like a firearm.

HATSAN PCP AIR RIFLE FACTOR SERIES INSTRUCTION MANUAL

⚠️WARNING: NOT A TOY. THIS AIR GUN IS RECOMMENDED FOR ADULT USE ONLY. MISUSE OR CARELESS USE MAY RESULT IN SERIOUS INJURY OR DEATH. DANGEROUS WITHIN 600 YARDS (550 METRES).

⚠️WARNING: ONLY USE CLEAN, DRY COMPRESSED AIR TO FILL THIS AIRGUN. THE USE OF CONCENTRATED OXYGEN (O₂) OR OTHER GASES CAN CAUSE FIRE OR AN EXPLOSION WHICH MAY RESULT IN SERIOUS INJURY OR DEATH, AND MAY CAUSE DAMAGE TO THE PRODUCT.



Serious. Solid. Impact.

HATSAN
ARMS COMPANY

www.hatsan.com.tr www.hatsanUSA.com



facebook.com/hatsan.com.tr



youtube.com/hatsanarms



instagram.com/hatsanarms